

Now is the time to see Bacteria on site.



※画像はイメージです



Bacteria Self-checker
mil-kin®

LIGHT SOURCE
LED is installed

SAMPLE STAGE
Apply any samples you want to see

POWER
Power switch to turn on/off the LED

BATTERY BOX
Size AA battery x 2

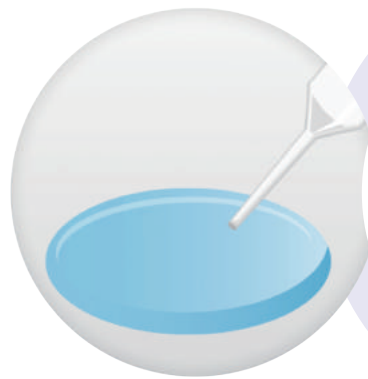
STAND
Stand for a smartphone with camera





HOW TO USE

Easy 3 steps how to use mil-kin



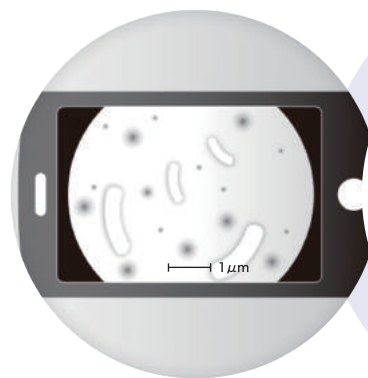
1 TAKE SAMPLES

To take a sample from where you want to see



2 APPLY SAMPLES

To drop a sample on the sample stage



3 SEE SAMPLES

To zoom in to get the best sight of samples



| | |
|--------------------|-------------------------------------------------------|
| Things you can see | Bacteria, fungus, oral bacteria, sperm cell, dirt, et |
| Size you can see | 1 μ m |



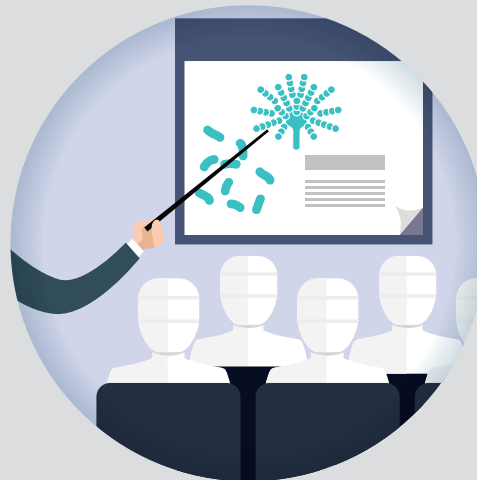
AS AN EDUCATIONAL TOOL



To take a sample on the spot



To check with mil-kin



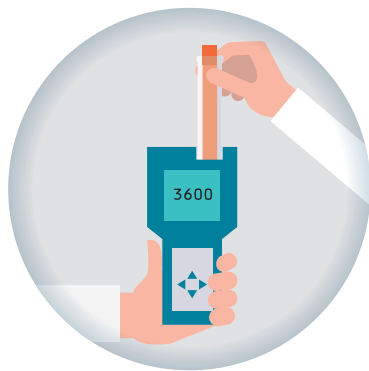
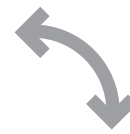
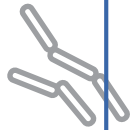
To share the hygiene information among staffs



AS AN EDUCATIONAL TOOL

People from Management or Quality Management Department can capture all the latest information on hygiene management and bacterias, however not so much for the people on site. At the conventional checks, the results were shown in numbers. Therefore it has been very difficult to be captured by people on site because they used a formula such as exponential form. mil-kin can make a “visualization” happen and enable for people on site to check the bacteria on the spot. mil-kin also allows people to manage the bacteria visually with videos and pictures. By implementing the hygiene management education/training with mil-kin, the whole hygiene level at the company will increase.

TO COMBINE WITH THE USUAL BACTERIOLOGICAL TEST



ATP Check

To combine with ATP check, it is much more easier to understand the condition by combining the numerical values and visuals.



Smear Test

To cultivate the bacteria which was detected by “mil-kin” and to check the number and type of bacteria,



“Bacterial” and “dirt” can be detected by “mil-kin”.

“Bacteria” and “dirt” can be visualized by using “mil-kin”. You can check anywhere you want randomly with “mil-kin” first to see the bacteria and dirt, then you can combine with ATP test to relate the “vision” and actual numerical numbers to make the checking more effective. You can also utilize “mil-kin” as a primary test in prior to the smear test (cultivation) so that you can perform the most effective and efficient test for the sections where are really necessary.

Various fields

“mil-kin” has various possibilities in various fields



As an education tool for employees. To give a hygiene training with visions.



As a disease prevention tool by oral check and a promotion of preventive dentistry.



As a contribution tool to male infertility.



As a contribution tool to breeding and hygiene control at processing stage.



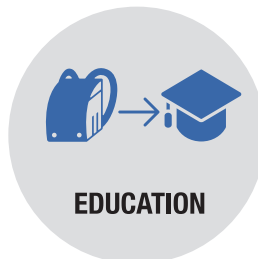
As an effective presentation using visions and actual numerical



As a tool for simplifying the hygiene check and providing the appropriate advice on the spot.



As a contribution tool to food poisoning prevention and a tool for water quality check of culture farm.



As an education tool to bring out the interests towards science.



As a tool for detecting diseases at an early stage and to check the water quality for hydroponic culture.



As a disease prevention tool for animals and to improve the breeding environment.



As a contribution tool for prevention of infectious disease and food



What do you want to see?
It is YOU to find the possibility of “mil-kin”.



Bacteria Self-checker
mil-kin®

| | |
|------------------------------|-----------------------------------------------------------------------------------------------------------------------------------------------------------------------------------------------------------------------------------------------------------------------------------------------------------------|
| MAGNIFICATION: | 1000 |
| OBJECTIVES: | more than 1µm |
| LIGHT SOURCE: | LED |
| POWER: | Size AA battery x 2 |
| DIMENSION (WxDxH): | mil-kin unit :55mm x 113mm x 140mm smartphone stand including stand leg : 175mm x 113mm x 146mm |
| WEIGHT: | About 450g (main unit, stand, leg and batteries) |
| STANDARD ACCESSARIES: | 10 syringes, 10 microtest tubes, 5 swabs |
| REMARKS : | <ul style="list-style-type: none"> * 1. It is not a waterproof specification. * 2. Sample must be liquid and transparent. * 3. Smart phone is not included. * 4. Specification (specified at the date of 1st of Sep) can be changed or modified without notification. |



※画像はイメージです



To create the Bacterial future.

Aqua System Co., Ltd

191-1 Tajima, Fujimi-machi, Maebashi-shi
Gunma, #371-0114 JAPAN
Tel :+81 27-288-7711 Fax: +81 27-288-3982

<http://www.mil-kin.com>

Patent application 2016-163997
Design application 2016-016329 / 2016-016330

“mil-kin” and “kinmirai” are the certificate of trademark registration belonged to Aqua System Co., Ltd



CONTACT